



**IBT BIOSERVICES**

4 Research Court, Suite 300  
Rockville, MD 20850  
877-411-2041  
Services@ibtbioservices.com

## Recombinant Ebola virus Glycoprotein minus the Transmembrane Region (EBOV rGPΔTM)

Catalog #: **0501-015**

Lot #: **1902006**

**Description:** Mature, recombinant, His-tagged Ebola virus Glycoprotein minus the transmembrane domain (EBOV rGPΔTM) is supplied as purified protein. EBOV rGPΔTM is produced in Sf9 insect cells using baculovirus for expression and is purified by FPLC.

**Storage:** 2-3 weeks at -20°C, -80°C long term

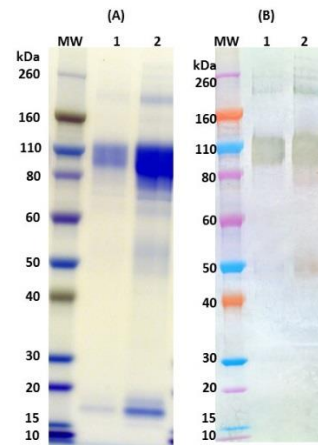
**Size:** **100 µg** of protein supplied in PBS (supplemented with glycerol, arginine and glutamic acid) at a concentration of **1.297 mg/mL**. The theoretical molecular weight of the protein is ~68 kDa including the His-tag, without glycosylation. Because of the highly glycosylated nature of this protein, migration in an SDS-PAGE gel is slowed resulting in broad, diffuse bands representing differing glycosylation forms.

**Relevance:** Recombinant glycoprotein provides a means as a control protein for immunoassays and a tool to enhance research.

**Western Blot:** Quality control testing demonstrates strong detection of GP null and GP1 under reduced conditions.

**Related Products:** IBT provides a wide array of anti-filovirus specific antibodies and other infectious disease reagents. Please see our website, [www.ibtbioservices.com](http://www.ibtbioservices.com) for more details.

### SDS-PAGE & Western Blot Detection



(A) SDS-PAGE and stain demonstrating 1 µg and 5 µg (lanes 1, 2 respectively) of EBOV rGPΔTM His-tag protein under denaturing and reducing conditions. MW denotes Novex® Sharp prestained protein marker. (B) Western blot detection of EBOV rGPΔTM at 50 ng and 100 ng (lanes 1, 2 respectively) using rabbit anti-EBOV GP polyclonal antibody (catalog# 0301-015) at 0.5 µg/mL and anti-rabbit IgG-HRP conjugate, followed by TMB membrane substrate.

### ELISA Data

EBOV rGPΔTM ng/well	OD 650 nm
800.000	3.587
400.000	3.692
200.000	3.643
100.000	3.595
50.000	3.654
25.000	3.545
12.500	3.410
6.250	3.267
3.125	2.681
1.563	1.976
0.781	1.191
0.391	0.728

Plate was coated with EBOV rGPΔTM starting at 800 ng/well, serially diluted in DPBS. Washed plate was detected using one dilution of a positive control serum, followed with anti-IgG HRP conjugate and TMB substrate. OD<sub>650</sub> is reported. Background of EBOV rGPΔTM coated plate positive control serum was 0.120 OD<sub>650</sub>.

**Intended for research use only, not for human, therapeutic, or diagnostic applications.**

*The buyer cannot sell or otherwise transfer this product for Commercial Purposes  
without written approval of Integrated BioTherapeutics, Inc.*

**Copyright 2019. Integrated BioTherapeutics, Inc. All rights reserved.**