



**IBT BIOSERVICES**

4 Research Court, Suite 300  
Rockville, MD 20850  
877-411-2041  
Services@ibtbioservices.com

## Rabbit anti-EBOV VP30

**Catalog #:** 0301-048

**Lot #:** 1802003

**Immunogen:** Peptide sequence specific to Ebola Virus (EBOV) VP30 phosphoprotein.

**Description:** Affinity purified rabbit polyclonal antibody reactive to EBOV VP30. The antibody detects EBOV VP30 in irradiated virus in Western Blot and ELISA.

**Supplied:** 100 µg is supplied in PBS + 0.02% sodium azide at a concentration of **0.575 mg/mL**.

**Raised in:** Rabbits

**Purification:** Antibody is affinity purified using immobilized immunogen.

**Clonality:** Polyclonal

**Relevance:** The antibody can be used for detection of a distinct epitope near the N-terminus of EBOV VP30 protein.

**Recommended Dilutions:**

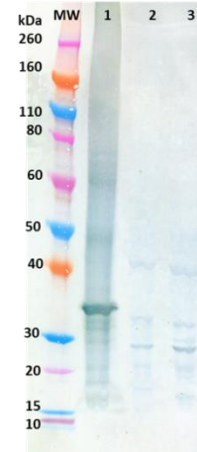
**ELISA:** Assay-dependent dilution.

**WB:** Assay-dependent dilution.

**Storage:** 2-3 weeks +4°C, -80°C long term. Avoid multiple freeze thaws.

**Cross Reactivity:** Some nonspecific reactivity was observed against Sudan Virus (SUDV) or Marburg-Musoke Virus (MARV) as demonstrated in the Western Blot.

### Western Blot Data:



Anti-EBOV VP30 antibody at 500 ng/mL was able to detect VP30 in heat-denatured and reduced irradiated EBOV virus at 1:2 dilution (lane 1) by Western Blot Analysis. Some nonspecific reactivity was observed with SUDV and MARV irradiated virus (lanes 2 and 3, respectively). Western Blots were developed using an anti-rabbit IgG-HRP conjugate and TMB Membrane substrate.

### ELISA Data:

Rabbit anti-EBOV VP30 Antibody (µg/mL)	1:1000 dilution of irradiated virus		
	EBOV	SUDV	MMARV
10.000	2.957	0.313	0.632
3.162	2.664	0.158	0.260
1.000	2.207	0.116	0.140
0.316	1.493	0.085	0.095
0.100	0.753	0.085	0.091
0.032	0.332	0.079	0.087
0.010	0.154	0.082	0.077
0.003	0.096	0.075	0.087
0.001	0.078	0.072	0.083
0.000	0.072	0.083	0.085
	<b>OD 650 nm</b>		

Antigens were diluted to a 1:1000 dilution in PBS for plate coating. Anti-EBOV VP30 antibody was serially diluted semi-log from 10 µg/mL and incubated on the coated plates. Washed plates were detected with anti-rabbit IgG-HRP conjugate and TMB substrate. OD650 is reported above.

**Intended for research use only, not for human, therapeutic, or diagnostic applications.**

*The buyer cannot sell or otherwise transfer this product for Commercial Purposes without written approval of Integrated BioTherapeutics, Inc.*

**Copyright 2018. Integrated BioTherapeutics, Inc. All rights reserved.**