



IBT BIOSERVICES

21 Firstfield RD * Suite 100
Gaithersburg, MD 20878
877-411-2041
Services@ibtbioservices.com

Rabbit anti-Staphylococcal Gamma Hemolysin C Polyclonal Antibody

Catalog #: 0314-002

Lot #: 1212002

Immunogen: Purified, His-tagged *Staphylococcus aureus* Gamma Hemolysin C (Hlg C) recombinant protein.

Description: Rabbit polyclonal antibody reactive to the *Staphylococcus aureus* Hlg C with His tag.

Supplied: 500 µg is supplied in PBS at a concentration of 4.97 mg/mL. Antibody contains 0.01% sodium azide.

Purification: Antibody is purified using immobilized protein A.

Clonality: Polyclonal

Relevance: The antibody can be used for detection of gamma-hemolysin secreted by *S. aureus*.

Recommended Dilutions:

ELISA: Assay-dependent dilution.

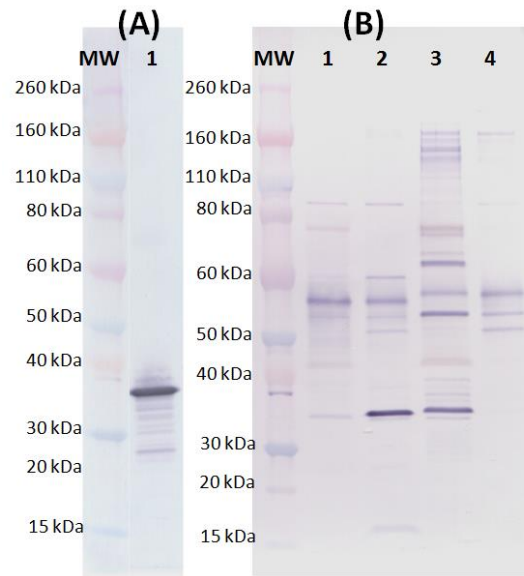
WB: This antibody can be utilized for detection at a concentration of 0.5 µg/mL.

Storage: 2-3 weeks +4°C, -20°C long term

Cross Reactivity: Due to the high level of homology among the bi-component cytolytins, this antibody demonstrates cross-reactivity to rHlg B, rLukF-PV and rLukS-PV. The immunogen contained a His-tag, therefore, proteins containing a His-epitope tag may also cross-react. This antibody is an IgG fraction of serum and therefore may have antibodies to other antigens including Staphylococcal antigens as a result of natural exposure and immune response.

Intended for research use only, not for human, therapeutic, or diagnostic applications. The buyer cannot sell or otherwise transfer this product for Commercial Purposes without written approval of Integrated BioTherapeutics, Inc.
Copyright 2014. Integrated BioTherapeutics, Inc. All rights reserved

Western Blot Data:



Western blot was detected with anti-Hlg C polyclonal antibody at 0.5 µg/mL and visualized using an anti-rabbit IgG-AP conjugate and AP substrate. MW denotes Novex Sharp prestained protein markers. (A) 100 ng recombinant rHlg C protein/lane (lane 1). (B) 15 µL of 24-hour culture supernatant/lane. Protein bands with molecular weights <40 kDa were detected in the culture supernatant of USA300 (lane 1), Newman (lane 2) and NCTC 8325-4 (lane 3) but not in the negative control exoprotein null NCTC 8325-4 strain (lane 4).

Related Products:

- Anti- *S. aureus* Gamma Hemolysin B Polyclonal Antibody
Catalog # 0314-001
- S. aureus* Gamma Hemolysin B (Hlg B)
Catalog # 1403-001
- S. aureus* Gamma Hemolysin C (Hlg C)
Catalog # 1403-002
- S. aureus* LukS-PV purified protein
Catalog # 0530-001
- S. aureus* LukF-PV purified protein
Catalog # 0530-002
- Anti- *S. aureus* PVL LukS Polyclonal Antibody
Catalog # 04-0009
- Anti- *S. aureus* LukS-PV Monoclonal Antibody
Catalog #0221-001
- Anti- *S. aureus* Alpha-Hemolysin Polyclonal Antibody
Catalog # 04-0010
- Anti-*S. aureus* Alpha-Hemolysin Monoclonal Antibody
Catalog # 0210-005
- Anti-*S. aureus* SEB Monoclonal Antibody
Catalog #0220-009
- Anti-*S. aureus* Superantigens Polyclonal Antibody
Catalog #0311-001