



**IBT BIOSERVICES**

21 Firstfield RD \* Suite 100  
Gaithersburg, MD 20878  
877-411-2041  
Services@ibtbioservices.com

## Rabbit anti-EBOV VLP Polyclonal Antibody

**Catalog #: 0315-001**

**Lot #: 1504005**

**Immunogen:** Ebola (Zaire strain) Virus-like Particles containing glycoprotein (GP), nucleoprotein (NP), and matrix protein (VP40)

**Description:** Protein A purified rabbit polyclonal antibody reactive to EBOV VLP raised in New Zealand white rabbits.

**Supplied:** 0.5 mg of antibody is supplied in PBS at a concentration of **4.162 mg/mL**.

**Clonality:** Polyclonal

**Relevance:** This antibody can be used for detection of EBOV proteins, specifically EBOV GP, EBOV VP40 and EBOV NP.

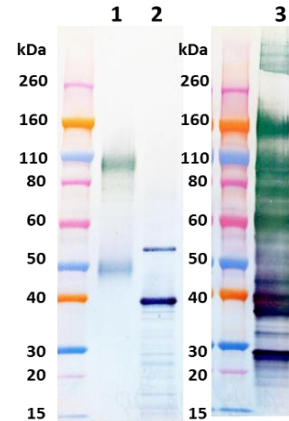
**Recommended Dilutions:**

**ELISA:** Assay-dependent dilution

**WB:** Assay-dependent dilution.

**Storage:** 2-3 weeks +4°C, -20°C long term

## Western Blot Detection



Lane 1. EBOV GP minus the transmembrane domain (GPdTM)  
Lane 2. EBOV matrix protein VP40  
Lane 3. Baculovirus-expressed EBOV VLP containing GP, NP and VP40

Western blot was detected with rabbit anti-EBOV VLP polyclonal antibody at 0.5 µg/mL and visualized using an anti-rabbit IgG-HRP conjugate and TMB membrane substrate.

### **Related Products:**

*IBT provides a wide array of anti-filovirus specific antibodies, recombinant proteins and other infectious disease reagents. Please see our website, [www.ibtbioservices.com](http://www.ibtbioservices.com) for more details.*

**Intended for research use only, not for human, therapeutic, or diagnostic applications.**

*The buyer cannot sell or otherwise transfer this product for Commercial Purposes without written approval of Integrated BioTherapeutics, Inc.*

**Copyright 2015. Integrated BioTherapeutics, Inc. All rights reserved.**