

## Rift Valley Fever MP12 Antibody

**Catalog #:** 04-0001

**Lot#:** 1605005

**Immunogen:** Sucrose purified virus from infected supernatant; Rift Valley Fever Virus (RVFV) MP-12 strain

**Description:** Rabbit polyclonal for RVFV MP12

**Raised in:** New Zealand White Rabbits

**Purification:** Protein A

**Clonality:** Polyclonal

**Size:** 0.5 mg of antibody is supplied in PBS at a concentration of 1.664 mg/mL

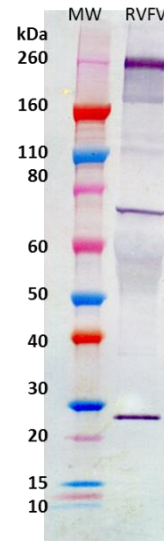
**Relevance:** MP12 represents a surrogate strain for the Category A (NIAID) and USDA/HHS Select Agent Rift Valley Fever.

### Recommended Dilutions:

ELISA: Assay-dependent dilution

W.B.: Assay-dependent dilution. If probing against purified infected cell supernatant, cross-adsorption recommended.

### Western Blot Detection



RVFV MP-12 strain was detected under denaturing and reducing conditions with anti-RVFV antibody at 0.5 µg/mL and visualized using anti-rabbit IgG-HRP conjugate and TMB membrane substrate. Anti-RVFV polyclonal antibody was diluted to 0.5 µg/mL and incubated with 2% FBS for 2 hours prior to blotting.

**Intended for research use only, not for human, therapeutic, or diagnostic applications.**

*The buyer cannot sell or otherwise transfer this product for Commercial Purposes without written approval of Integrated BioTherapeutics, Inc.*

**Copyright 2016. Integrated BioTherapeutics, Inc. All rights reserved.**