



IBT BIOSERVICES

4 Research Court, Suite 300
Rockville, MD 20850
877-411-2041
Services@ibtbioservices.com

Rabbit anti-*S. aureus* LukS-PV Polyclonal Antibody

Catalog #: 04-0009

Lot #: 1704001

Immunogen: Recombinant Panton-Valentine
Leukocidin (PVL) LukS subunit-His tag protein

Description: Rabbit polyclonal antibody reactive to the
LukS subunit of *Staphylococcal aureus* PVL expressed in
E. coli.

Supplied: 500 µg is supplied in 1X DPBS + 0.01%
sodium azide at a concentration of 1.334 mg/mL.

Purification: Antibody is purified using immobilized
protein A.

Clonality: Polyclonal

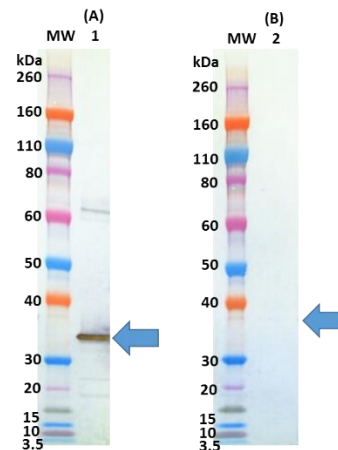
Relevance: This antibody may be used to detect the
LukS subunit of PVL produced by PVL-producing strains
of *Staphylococcus aureus*.

Storage: 2-3 weeks +4°C, -20°C long term

Cross Reactivity: This antibody demonstrates slight
cross-reactivity to the LukF subunit of Staphylococcal
PVL in Western Blot. The immunogen contained a His-
tag therefore proteins containing His-epitope tag may
also cross-react. This antibody is an IgG fraction of
serum and therefore may have antibody to other
antigens including Staphylococcal antigens as a result of
natural exposure and immune response.

For additional *S. aureus* products, please visit:
<http://www.ibtbioservices.com/reagents/staphylococcus/>

Western Blot Data:



In Western Blot, recombinant LukS PV (cat 0530-001) is
detected as low as 10 ng using 0.5 µg/mL of rabbit anti-
LukS PV polyclonal antibody and visualized using an
anti-rabbit HRP conjugate and TMB Membrane
substrate. Slight cross-reactivity against recombinant
LukF PV (cat 0530-002) was observed.

Toxin Functionality:

Human promyelocytic leukemia cell line HL60 was
differentiated into neutrophils by treatment with DMSO.
Neutrophils were incubated with serial dilutions of the
rabbit anti-LukS PV polyclonal antibody and equimolar
concentrations of recombinant LukS-PV and
recombinant LukF-PV for 3 hours at 37°C with 5% CO₂
and 95% humidity. Cellular viability was determined by
adding XTT and incubating for additional 16-18 hours.
Cells were centrifuged and the OD determined in the
supernatants at 470/690 nm. EC₅₀ value was
determined to be 10.4 µg/mL.

Intended for research use only, not for human, therapeutic, or diagnostic applications.

*The buyer cannot sell or otherwise transfer this product for Commercial Purposes without written approval of
Integrated BioTherapeutics, Inc.*

Copyright 2017. Integrated BioTherapeutics, Inc. All rights reserved.