



IBT BIOSERVICES

4 Research Court, Suite 300
Rockville, MD 20850
877-411-2041
Services@ibtbioservices.com

Rabbit anti-SARS-CoV-2 S1-C pAb

Catalog #: 0371-001

Lot #: 2007003

Immunogen: Peptide sequence specific to SARS-CoV-2 Spike protein, near the C-terminus of S1 subunit

Description: Affinity-purified rabbit polyclonal antibody reactive to S1 subunit in Western blot and ELISA.

Supplied: 100 µg is supplied in PBS at a concentration of 0.409 mg/mL.

Raised in: Rabbits

Purification: Antibody is affinity-purified using immobilized immunogen.

Clonality: Polyclonal

Recommended Dilutions:

ELISA: Assay-dependent dilution

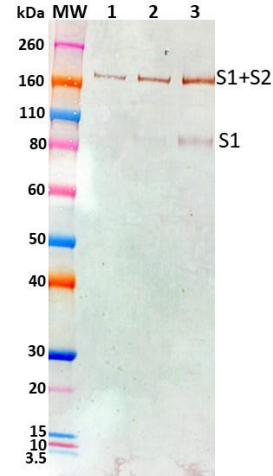
WB: Assay-dependent dilution.

Storage: 2-3 weeks -20°C, -80°C long term

Related Products:

IBT provides a wide array of anti-filovirus specific antibodies, recombinant proteins and other infectious disease reagents. Please see our website, www.ibtbioservices.com for more details.

Western Blot Data:



Spike protein at 25, 50 and 100 ng (lanes 1-3) under reduced condition, was detected using rabbit pAb at 100 ng/mL and visualized using an anti-rabbit IgG-HRP conjugate and TMB membrane substrate.

ELISA Data:

Rabbit Pab (µg/mL)	OD ₆₅₀
18.500	3.913
5.850	3.831
1.850	3.712
0.585	3.260
0.185	2.463
0.059	1.376
0.019	0.582
0.006	0.218
0.002	0.102
0.001	0.066
0.000	0.056

Spike protein was diluted to 1.5 µg/mL in PBS for plate coating. Rabbit pAb was serially diluted semi-log and incubated on the coated plates. Washed plates were detected with anti-rabbit IgG-HRP conjugate and TMB substrate. OD₆₅₀ is reported above.

Intended for research use only, not for human, therapeutic, or diagnostic applications.

The buyer cannot sell or otherwise transfer this product for Commercial Purposes without written approval of Integrated BioTherapeutics, Inc.

Copyright 2020. Integrated BioTherapeutics, Inc. All rights reserved.