



# IBT BIOSERVICES

4 Research Court, Suite 300  
Rockville, MD 20850  
877-411-2041  
Services@ibtbioservices.com

## Rabbit anti-SARS-CoV-2 S1-N pAb

**Catalog #:** 0372-001

**Lot #:** 2007004

**Immunogen:** Peptide sequence specific to SARS-CoV-2 Spike protein, near the N-terminus of S1 subunit

**Description:** Affinity-purified rabbit polyclonal antibody reactive to S1 subunit in Western blot and ELISA.

**Supplied:** 100 µg is supplied in PBS at a concentration of 1.310 mg/mL.

**Raised in:** Rabbits

**Purification:** Antibody is affinity-purified using immobilized immunogen.

**Clonality:** Polyclonal

### Recommended Dilutions:

**ELISA:** Assay-dependent dilution

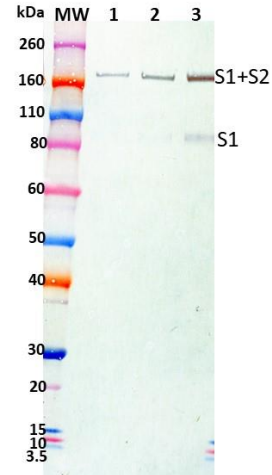
**WB:** Assay-dependent dilution.

**Storage:** 2-3 weeks -20°C, -80°C long term

### Related Products:

IBT provides a wide array of anti-filovirus specific antibodies, recombinant proteins and other infectious disease reagents. Please see our website, [www.ibtbioservices.com](http://www.ibtbioservices.com) for more details.

### Western Blot Data:



Spike protein at 25, 50 and 100 ng (lanes 1-3) under reduced condition, was detected using rabbit pAb at 100 ng/mL and visualized using an anti-rabbit IgG-HRP conjugate and TMB membrane substrate.

### ELISA Data:

Rabbit Pab (µg/mL)	OD650
29.100	3.705
9.202	3.658
2.910	3.371
0.920	3.107
0.291	2.336
0.092	1.278
0.029	0.552
0.009	0.235
0.003	0.111
0.001	0.069
0.000	0.057

Spike protein was diluted to 1.5 µg/mL in PBS for plate coating. Rabbit pAb was serially diluted semi-log and incubated on the coated plates. Washed plates were detected with anti-rabbit IgG-HRP conjugate and TMB substrate. OD<sub>650</sub> is reported above.

**Intended for research use only, not for human, therapeutic, or diagnostic applications.**

The buyer cannot sell or otherwise transfer this product for Commercial Purposes without written approval of Integrated BioTherapeutics, Inc.

Copyright 2020. Integrated BioTherapeutics, Inc. All rights reserved.